

KEMPEROL AC SPEED

# THE RAPID WATERPROOFING SYSTEM







# CONTENTS

## 1 KEMPEROL AC Speed

- 04 About KEMPEROL AC Speed
- 06 Product details AC Speed
- 08 Product details AC Speed+
- 10 System solution
- 13 Matching products
- 14 Application

## 2 The waterproofing **in use**

- 16 Residential complex, Obervellmar
- 17 Rankweil Station, Austria

## 3 Advice and **service**

- 18 Service, advice and contact information

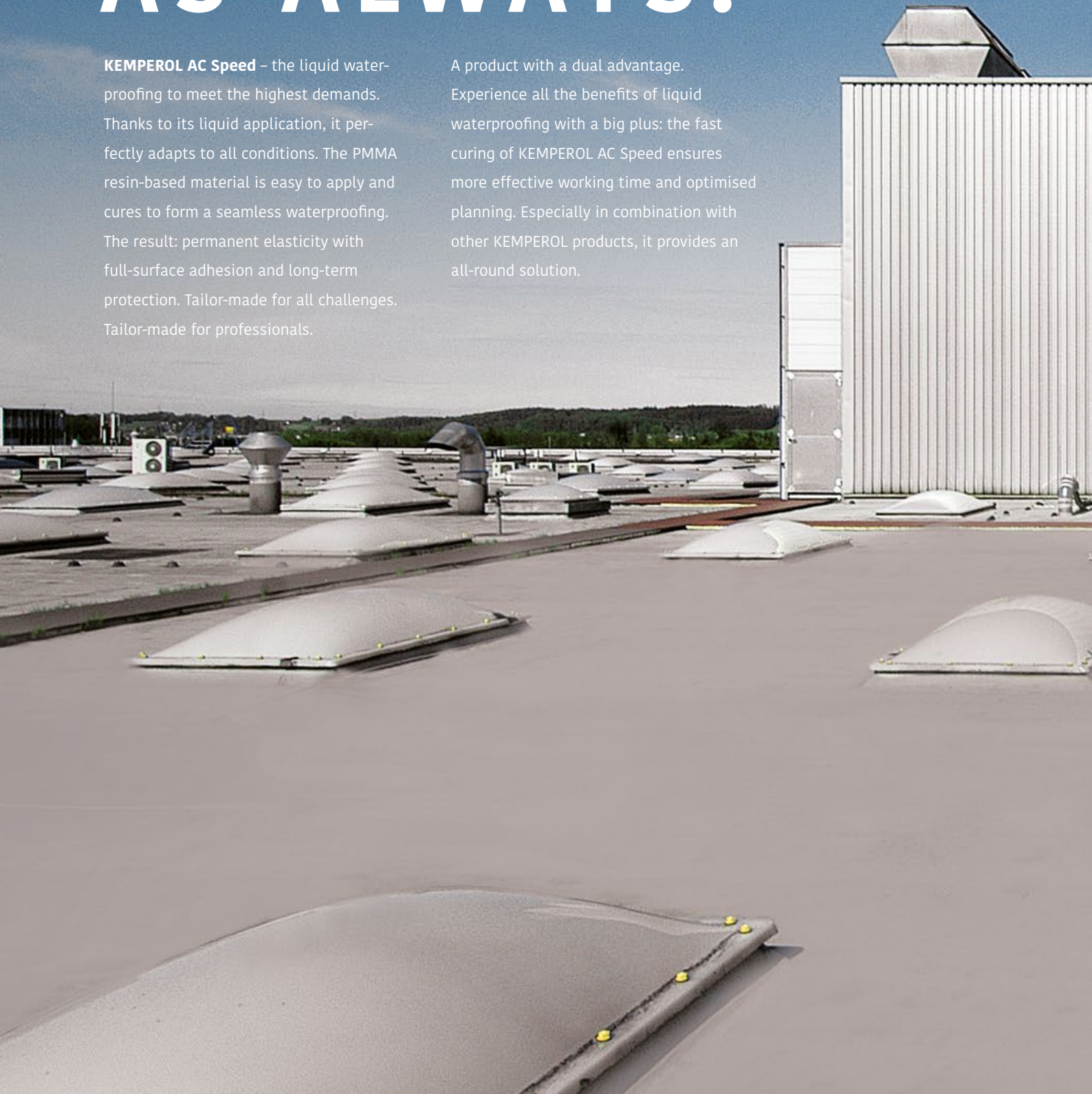


KEMPEROL AC SPEED

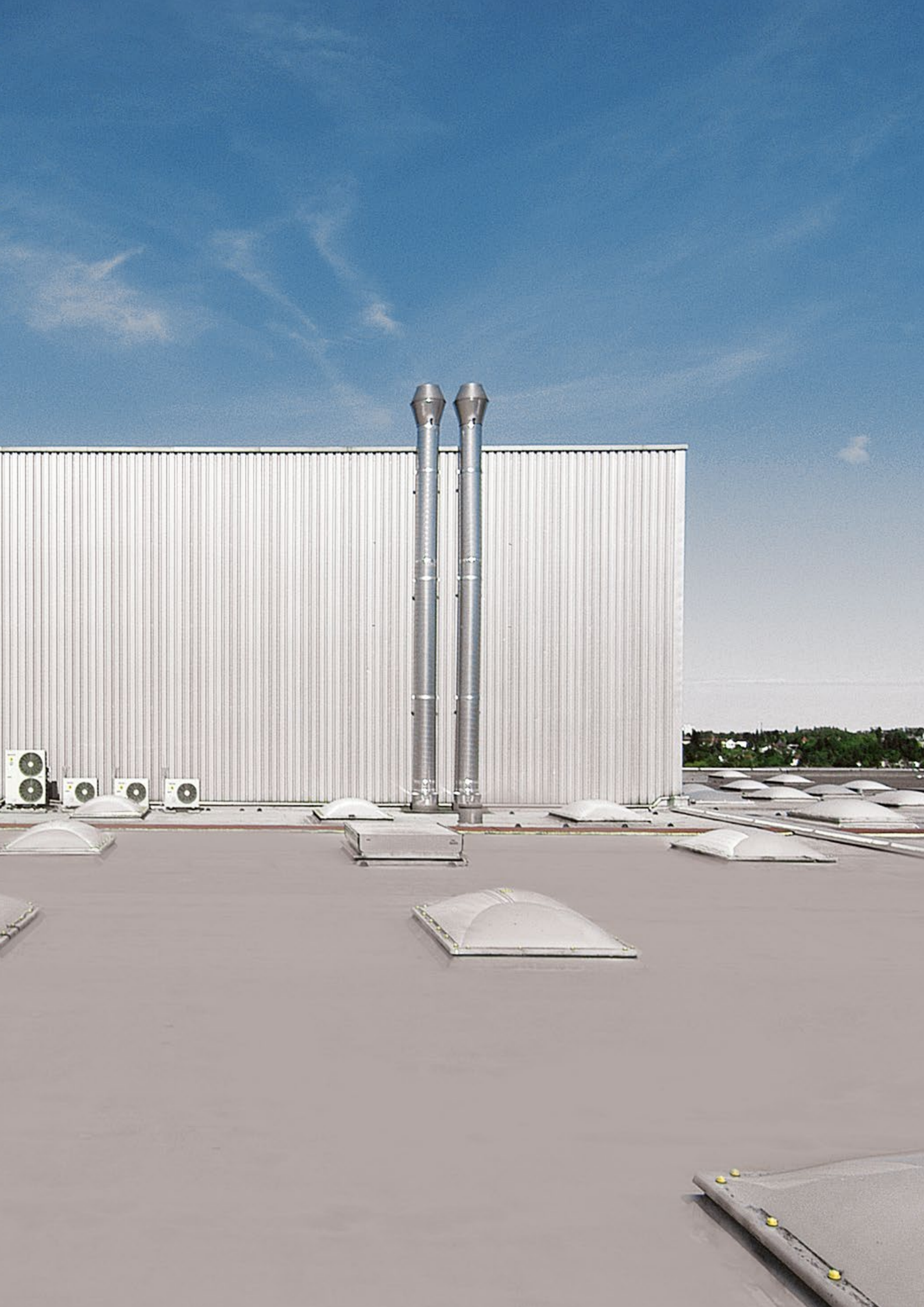
# THE BEST FOR PROFESSIONALS! AS ALWAYS.

**KEMPEROL AC Speed** – the liquid waterproofing to meet the highest demands. Thanks to its liquid application, it perfectly adapts to all conditions. The PMMA resin-based material is easy to apply and cures to form a seamless waterproofing. The result: permanent elasticity with full-surface adhesion and long-term protection. Tailor-made for all challenges. Tailor-made for professionals.

A product with a dual advantage. Experience all the benefits of liquid waterproofing with a big plus: the fast curing of KEMPEROL AC Speed ensures more effective working time and optimised planning. Especially in combination with other KEMPEROL products, it provides an all-round solution.







# PRODUCT DETAILS

**KEMPEROL AC Speed** is the effective solution for long-term waterproofing. The material, which is based on PMMA resins and cures particularly quickly, can be walked on after just 35 minutes and receive the next layer after 60 minutes, which means that downtimes can be reduced to a minimum. This makes the fleece-reinforced **KEMPEROL AC Speed** the ideal partner, especially for waterproofing surfaces.



## PRODUCT BENEFITS



### Particularly rapid curing

The product's rapid curing means effective use of working time and optimised project planning.



### Minimal weather risk

Weather risks can be reduced to a minimum, as the waterproofing can be applied at temperatures as low as -5 °C.



### Tested quality

**KEMPEROL AC Speed** has passed all assessments in the highest categories, according to the ETA.



### Resistant to root penetration, according to the FLL test

Long-term resistant to root and rhizome penetration





## PROPERTIES

### FIELDS OF APPLICATION

Used in combination with our **KEMPEROL 165 fleece**, it is ideally suited for use as surface water-proofing in outdoor areas.

### PROCESSING TIMES

At +23 °C and max. 50% humidity:  
Processing time approx. 20 minutes  
Rainproof after approx. 35 minutes  
Can be walked on after approx. 35 minutes  
Can receive the next coat after approx. 60 minutes

### STANDARD COLOURS



**Traffic grey**  
RAL 7042

### CONSUMPTION

At least 2.5 kg/m<sup>2</sup> depending on layer thickness (see Technical Information TI 03 - Layer thicknesses according to regulations)

### AVAILABLE SIZES

15 kg container (component A) in combination with KEMPEROL CP catalyst powder (component B)



# PRODUCT DETAILS

Like KEMPEROL AC Speed, **KEMPEROL AC Speed+** is a particularly fast-curing liquid waterproofing based on PMMA resins. The additional plus in KEMPEROL AC Speed+ is its higher viscosity, which makes the product particularly suitable for securely waterproofing joints and structural details.



## PRODUCT BENEFITS



### Particularly rapid curing

The product's rapid curing means effective use of working time and optimised project planning.



### Minimal weather risk

Weather risks can be reduced to a minimum, as the waterproofing can be applied at temperatures as low as -5 °C.



### Tested quality

**KEMPEROL AC Speed+** has passed all assessments in the highest categories, according to the ETA.



### Resistant to root penetration, according to the FLL test

Long-term resistant to root and rhizome penetration





## PROPERTIES

### FIELDS OF APPLICATION

Used in combination with our **KEMPEROL 165 fleece**, it is ideally suited for waterproofing joins and structural details in outdoor areas.

### PROCESSING TIMES

At +23 °C and max. 50% humidity:

Processing time 15 minutes

Rainproof after 35 minutes

Can be walked on after 35 minutes

Can receive the next coat after 60 minutes

### STANDARD COLOURS



**Traffic grey**  
RAL 7042



**Anthracite**  
RAL 7016

### CONSUMPTION

At least 2.5 kg/m<sup>2</sup>, depending on the condition of the substrate and the layer thickness (see Technical Information TI 03 – Layer thicknesses according to regulations).

### AVAILABLE SIZES

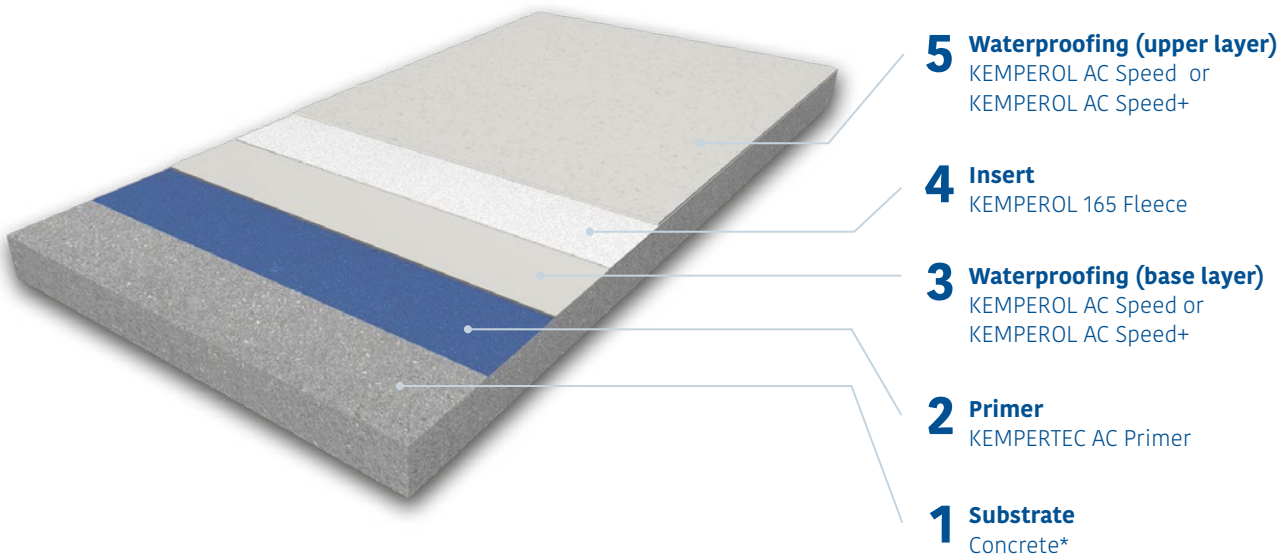
10 kg container (component A) in combination with KEMPEROL CP catalyst powder (component B)



# SYSTEM SOLUTION

## KEMPEROL AC SPEED AND KEMPEROL AC SPEED+ SYSTEM SOLUTION

Quality has a system at KEMPEROL: In our product portfolio, we offer a custom-fit solution for every project you want to realize. The systems are easy to implement and have maximum effect. Set your own standard in precision and quality.



\* Please follow the primer instructions











## A SELECTION OF MATCHING PRODUCTS

KEMPEROL also offers you the supplementary material for your successful project. Powerful on its own – unbeatable in combination.



### FLEECE

#### KEMPEROL 165

For adjusting the layer thickness and reinforcement for KEMPEROL waterproofing.



### PRIMER

#### KEMPERTEC AC

The rapid primer. Can be applied even at ambient temperatures as low as -5 °C.



### COATING

#### KEMPERDUR AC-FINISH

A fast-curing sealant based on methyl methacrylate (PMMA) for a coloured design.



### COATING

#### KEMPERDUR AC

A rapid-curing liquid coating system based on methyl methacrylate (PMMA).



### COATING

#### KEMPERDUR AC PARK

Specially designed for use on parking areas in multi-storey car parks and on parking decks open to the elements.



### COATING

#### KEMPERDUR AC PARK+

Tested according to OS 10 and specially designed for application on ramps.

## WE WOULD BE HAPPY TO ADVISE YOU!

TECHNICAL HOTLINE  
+49 (0)561 8295-5555

ALL PRODUCT DETAILS AT  
[kemperol.com](http://kemperol.com)

## BRIEF GUIDE

# QUICK AND EASY TO APPLY

Due to its quick and easy handling, **KEMPEROL AC Speed** can be applied in just a few steps – both for detailing work and on large surfaces.

## APPLICATION VIDEO



You will find all the steps of the process in our video. Just scan the QR code and get started!



## 1 Preparation

The substrate must be dry and free of any substances that may reduce adhesiveness – in other words, free of dust, grease, etc. Pre-treat substrates according to technical information 21.



## 2 Primer

Apply **KEMPERTEC AC Primer** evenly to the substrate.





### 3 Detailing work

Detailing work should be carried out first, e.g. on ventilation pipes or wall flashings, so that the waterproofing can then be applied to the surface.



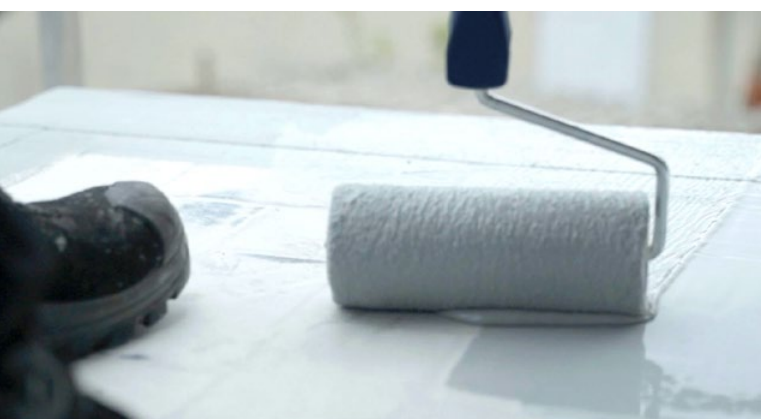
### 4 Surface waterproofing (base layer)

Apply two-thirds of the material as the first layer on the substrate.



### 5 Working in fleece

Next, roll the **KEMPEROL 165 Fleece** into the first layer of the liquid **KEMPEROL AC Speed**.



### 6 Surface waterproofing (upper layer)

Apply the final layer of **KEMPEROL AC Speed** wet-on-wet until it is completely saturated.

# KEMPEROL AC SPEED IN USE

## Residential complex, Obervellmar

Waterproofing the ceiling of a new building's underground car park

In Vellmar, the housing of the future is being created with the construction of the new Obervellmar residential complex. All balconies and terraces, the ramp to the underground car park and the underground car park ceiling were primed and waterproofed, comprising an area of 3,500 m<sup>2</sup> before the latter was transformed into a green roof thanks to the perfect suitability of **KEMPEROL AC Speed** and its FLL test. Because of this same suitability, **KEMPERDUR AC Park+** was chosen for the underground car park's entrance – two products in use in their specialist areas.



### PROJECT DATA

**OBJECT:** Residential complex, Obervellmar

**LOCATION:** Vellmar

**YEAR OF EXECUTION:** 2021

**SPECIALIST:** HGS Bauservice GmbH

**PRODUCTS:** KEMPERTEC AC PRIMER,  
KEMPEROL AC SPEED,  
KEMPERDUR AC PARK+





# Rankweil Station, Austria

## Waterproofing a roof with an irregular design

One of the most important transport hubs in the Austrian region of Vorderland-Feldkirch is the station in Rankweil, a community of 12,000 inhabitants. To ensure that it can withstand today's demands and that public transport will continue to flow smoothly in the future, it has been completely renovated and extensively modernised in recent years.

### PROJECT DATA

**OBJECT:** Rankweil Station

**LOCATION:** Rankweil

**YEAR OF EXECUTION:** 2017, 2018

**SPECIALIST:** ENTNER-DACH GmbH & Co.KG

**PRODUCTS:** KEMPERTEC AC-Primer,  
KEMPEROL AC Speed







SERVICE, ADVICE AND CONTACT INFORMATION

# FOR PROFESSIONALS, BY PROFESSIONALS

One of the quality features of KEMPEROL is its local accessibility to the user. We also embody this philosophy when it comes to our service. Our expert advisers are there for you worldwide, thanks to our international locations and sales networks. Technical advice, training or on-site project support – KEMPEROL supports you through to the optimal result of your project.

## OUR SERVICE PROMISE

- ✓ Expert advice from the product to the finished project
- ✓ Preparation of maintenance plans
- ✓ Worldwide support and training on site



ANY QUESTIONS?

WE WOULD BE HAPPY TO ADVISE YOU!



## Technical hotline

+49 (0)561 8295-5555

Mon.-Thu.: 7.30 am to 17.30 pm

Fri.: 7.30 am to 15.30 pm




## Sales hotline

+49 (0)561 8295-5568


Mon.-Thu.: 7.30-17.30 h

Fri.: 7.30-15.30 h


LOOKING FOR MORE  
KEMPER SYSTEM?

 @KemperSystemGermany

post@kemper-system.com

 @KemperSystem

kemper-system.com

 @KemperSystemGermany

kemperol.com



KEMPER SYSTEM GmbH & Co. KG  
Holländische Straße 32-36 | 34246 Vellmar, Germany  
Phone +49 (0)561 8295-0 | [post@kemper-system.com](mailto:post@kemper-system.com)

