

KEMPEROL 1K-SF

# WATERPROOFING FOR STRUCTURAL DETAILS







# CONTENTS

## 1

### KEMPEROL **1K-SF**

- 04 About KEMPEROL 1K-SF
- 06 Product details
- 08 System solution
- 09 Matching products
- 10 Plinth waterproofing for timber houses
- 12 Application

## 2

### The waterproofing **in use**

- 14 Bismarck Monument, Hamburg
- 16 Garage roof, Kassel

## 3

### Advice and **service**

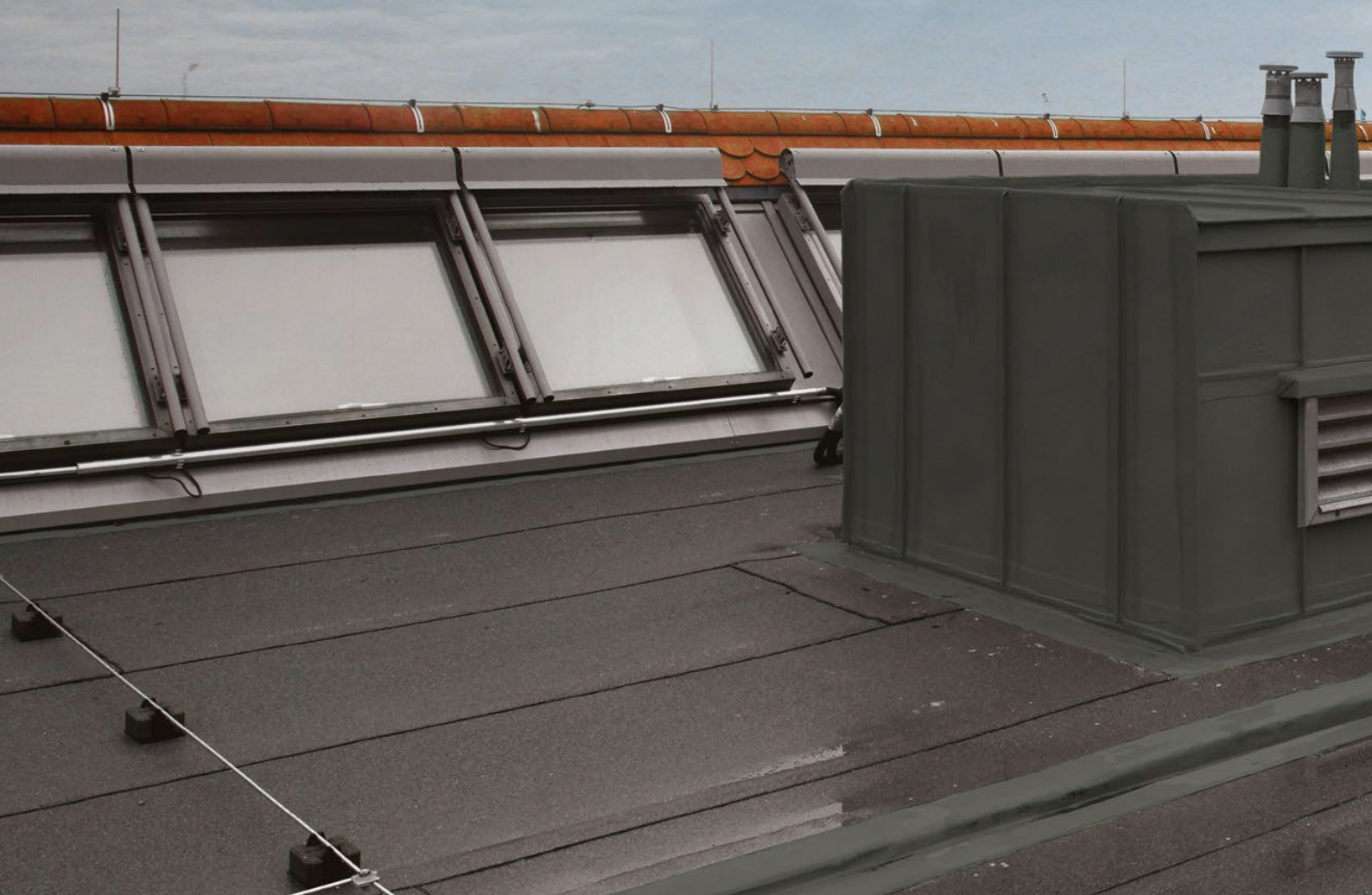
- 18 Service, advice and contact information

KEMPEROL 1K-SF

# THE BEST FOR PROFESSIONALS. AS ALWAYS!

**KEMPEROL 1K-SF** – the liquid waterproofing to meet the highest demands. Thanks to its liquid application, it perfectly adapts to all conditions. The reactive resin-based material is easy to apply and cures to form a seamless waterproofing. The result: permanent elasticity with full-surface adhesion and long-term protection, with a proven useful life of 25 years. Tailor-made for your requirements. Tailor-made for professionals.

One component. Many application areas. The greater the complexity of the substrate geometry, the more difficult it is to carry out time-consuming detailing work. Thanks to its easy application, straight from the container, our solvent-free **KEMPEROL 1K-SF** proves to be an ideal partner – including and especially when, for detailing work, KEMPEROL is combined with other materials.





# PRODUCT DETAILS

**KEMPEROL 1K-SF** is the waterproofing for professionals. Thanks to its easy handling, especially on smaller surfaces, the polyurethane-based waterproofing is extremely cost-effective. The single-component, fleece-reinforced waterproofing is suitable for structural details; for surface waterproofing on flat roofs, balconies and terraces; as a plinth waterproofing for timber houses; and for waterproofing gaps in areas in contact with the ground, among other things. And best of all, **KEMPEROL 1K-SF** can be used on many substrates without priming and is rainproof after just one hour.



## PRODUCT BENEFITS



### Solvent-free and odourless

The waterproofing can also be used in sensitive outdoor areas without any problems.



### Single-component and directly applicable

**KEMPEROL 1K-SF** was designed for rapid application. The material only needs to be stirred and can then be applied directly from the container.



### Suitable for pale, damp substrates

The dampness of the substrate no longer puts a spanner in the works. **KEMPEROL 1K-SF** can also be applied to pale, damp substrates.



### Can be used on almost all substrates without priming

For roof, balcony or plinth – **KEMPEROL 1K-SF** is up to all challenges. Almost any texture and any substrate is protected for the long term.



## PROPERTIES

### FIELDS OF APPLICATION

**KEMPEROL 1K-SF** is suitable for exterior use as surface waterproofing and for joints in combination with **KEMPEROL Fleece** – whether for new buildings or repairs.

### CONSUMPTION

Depending on the condition of the substrate, at least 3.0 kg/m<sup>2</sup>

### PROCESSING TIMES

Processing time approx. 30 minutes

Rainproof after approx. 60 minutes

Can be walked on after approx. 12 h

Cured after 1 to 2 days

### STANDARD COLOURS



Light grey  
RAL 7035



Anthracite  
RAL 7022

### AVAILABLE SIZES

- 6.5 kg

- 14 kg

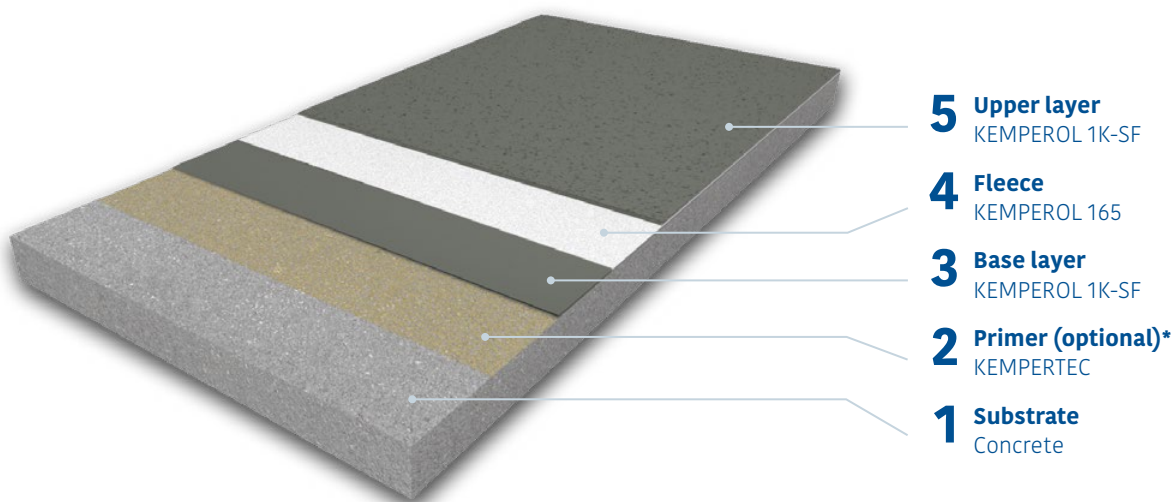




## KEMPEROL 1K-SF

### SYSTEM SOLUTION

Quality has a system at KEMPEROL: In our product portfolio, we offer a custom-fit solution for every project you want to realise. The systems are easy to implement and have maximum effect. Set your own standard in precision and quality.



\* Please follow the primer instructions.



## A SELECTION OF SUITABLE PRODUCTS

KEMPEROL also offers you the supplementary material for your successful project. Powerful individually – unbeatable in combination.



FLEECE

### KEMPEROL 165

For adjusting the layer thickness and reinforcement for KEMPEROL waterproofing



PRIMER

### KEMPERTEC GLASS PRIMER

Provides optimum adhesion between glass and selected KEMPEROL waterproofing products



PRIMER

### KEMPERTEC TPO

Specially developed for polyolefin-based plastics



PRIMER

### KEMPERTEC EP5

Can be used at temperatures from 5 °C



PRIMER

### KEMPERTEC R

The rapid primer



PRIMER

### KEMPERTEC FPO

Specially developed for polyolefin-based plastics

## WE WOULD BE HAPPY TO ADVISE YOU!

TECHNICAL HOTLINE  
+49 (0)561 8295-5555

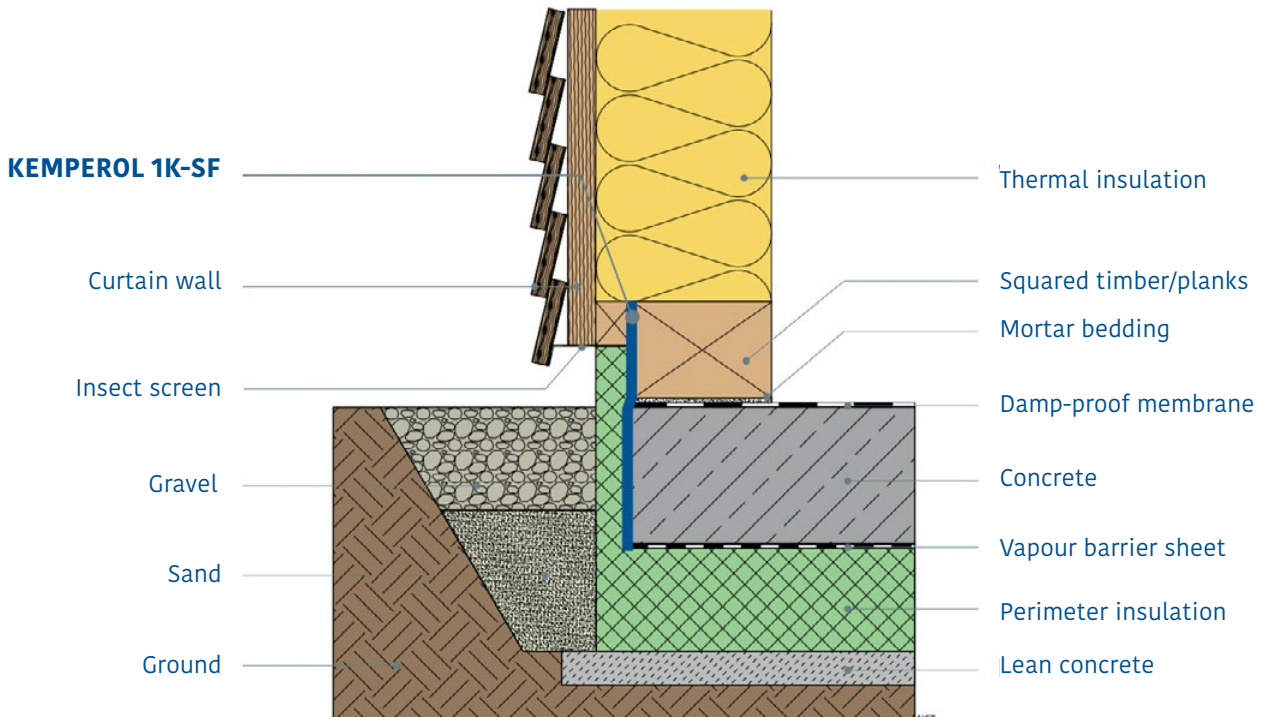
ALL PRODUCT DETAILS AT  
[kemperol.com](http://kemperol.com)

# RELIABLE AND WATERPROOF

## KEMPEROL 1K-SF AS A RELIABLE PLINTH WATERPROOFING FOR TIMBER HOUSES

**KEMPEROL 1K-SF** meets all requirements for waterproofing timber houses between the floor slab and the wall structure and is therefore also suitable for use as plinth waterproofing. The product has been designed to provide comprehensive protection in combination with other materials. Composite surfaces of any kind can be processed easily, quickly and reliably.

### DETAIL OF THE STRUCTURE





## BRIEF GUIDE

# QUICK AND EASY TO PROCESS

Due to its quick and easy handling, **KEMPEROL 1K-SF** can be applied in just a few steps – both for detailing work and on surfaces.



## 1 Preparation

The substrate must be free of adhesion-reducing substances – in other words, free of dust, grease, etc. Pretreat substrates according to the primer instructions.



## 2 Execution of detailing work

Detailing work should be carried out first, e.g. on ventilation pipes or wall flashings, so that the waterproofing can then be applied to the surface.

## ▶ APPLICATION VIDEO



You will find all the steps of the process in our video. Just scan the QR code and get started!



### 3 Application of the waterproofing

After stirring, **KEMPEROL 1K-SF** can be applied directly from the container. A base layer is applied to the substrate.



### 4 Working in fleece

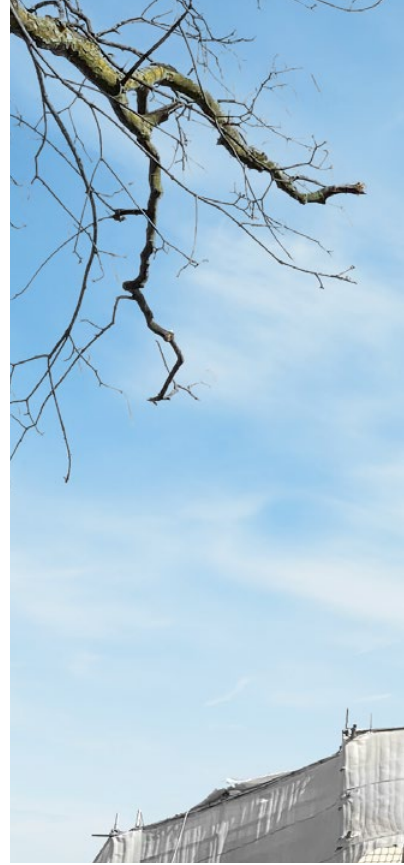
Roll the **KEMPEROL 165 Fleece** into the first layer of **KEMPEROL 1K-SF**.



### 5 Rolling on the last layer

Directly apply **KEMPEROL 1K-SF** wet-on-wet until it is completely saturated.

# KEMPEROL 1K-SF IN USE



## Bismarck Monument, Hamburg

### Plinth waterproofing of a 625-tonne landmark

At 34 metres, the Bismarck Monument in the Altona district, built around 1906, is the tallest monument in Hamburg. Surrounded by the Old Elbe Park, the statue of the first German chancellor Otto von Bismarck is emblazoned on a granite plinth. Shortly after his death, the monument was commissioned, at the time was intended to embody the Hanseatic city as a symbol of prosperity, market rights and justice. The traditional Hanseatic shape of the Roland statue was chosen for the style.

Because of Bismarck's history, the future of the monument is perpetually in public discourse. Therefore, in addition to a renovation, other supplementary concepts are now being discussed. The monument and its associated forecourt have been affected over the years by weather, the surrounding nature and wear and tear. The renovation is now intended to protect the existing spaces in the monument against moisture penetration.





## PROJECT DATA

**OBJECT:** Bismarck Monument

**LOCATION:** Hamburg

**YEAR OF EXECUTION:** 2021

**SPECIALIST:** Hermann Bade GmbH & Co. KG

**PRODUCTS:** KEMPEROL 1K-SF,  
KEMCO POX 2K Primer





## Garage roof, Kassel

### Keeps car and bike dry

The fact that **KEMPEROL 1K-SF** delivers powerful results on garage roofs as well is demonstrated by a detached house in Kassel, whose garage is now reliably waterproofed.

A quick and safe solution was needed for the garage to protect the building fabric from moisture penetration. Using the **KEMPEROL 1K-SF** waterproofing, optimum protection was established within two days, thanks to which nothing now stands in the way of carefree use of the garage.





## PROJECT DATA

**OBJECT:** Garage roof

**LOCATION:** Kassel

**YEAR OF EXECUTION:** 2020

**PRODUCTS:** KEMPEROL 1K-SF





SERVICE, ADVICE AND CONTACT INFORMATION

# FOR PROFESSIONALS, BY PROFESSIONALS

One of the quality features of KEMPEROL is its local accessibility to the user. We also embody this philosophy when it comes to our service. Our expert advisers are there for you worldwide, thanks to our international locations and sales networks. Technical advice, training or on-site project support – KEMPEROL supports you through to the optimal result of your project.

## OUR SERVICE PROMISE

- ✓ Expert advice from the product to the finished project
- ✓ Preparation of maintenance plans
- ✓ Worldwide support and training on site

ANY QUESTIONS?

WE WOULD BE HAPPY TO ADVISE YOU!



## Technical hotline

+49 (0)561 8295-5555

Mon.-Thu.: 7.30-17.30 h

Fri.: 7.30-15.30 h




## Sales hotline

+49 (0)561 8295-5568


Mon.-Thu.: 7.30-17.30 h

Fri.: 7.30-15.30 h


LOOKING FOR MORE  
KEMPER SYSTEM?

 @KemperSystemGermany

[post@kemper-system.com](mailto:post@kemper-system.com)

 @KemperSystem

[kemper-system.com](http://kemper-system.com)

 @KemperSystemGermany

[kemperol.com](http://kemperol.com)



KEMPER SYSTEM GmbH & Co. KG  
Holländische Straße 32-36 | 34246 Vellmar, Germany  
Phone +49 (0)561 8295-0 | [post@kemper-system.com](mailto:post@kemper-system.com)

